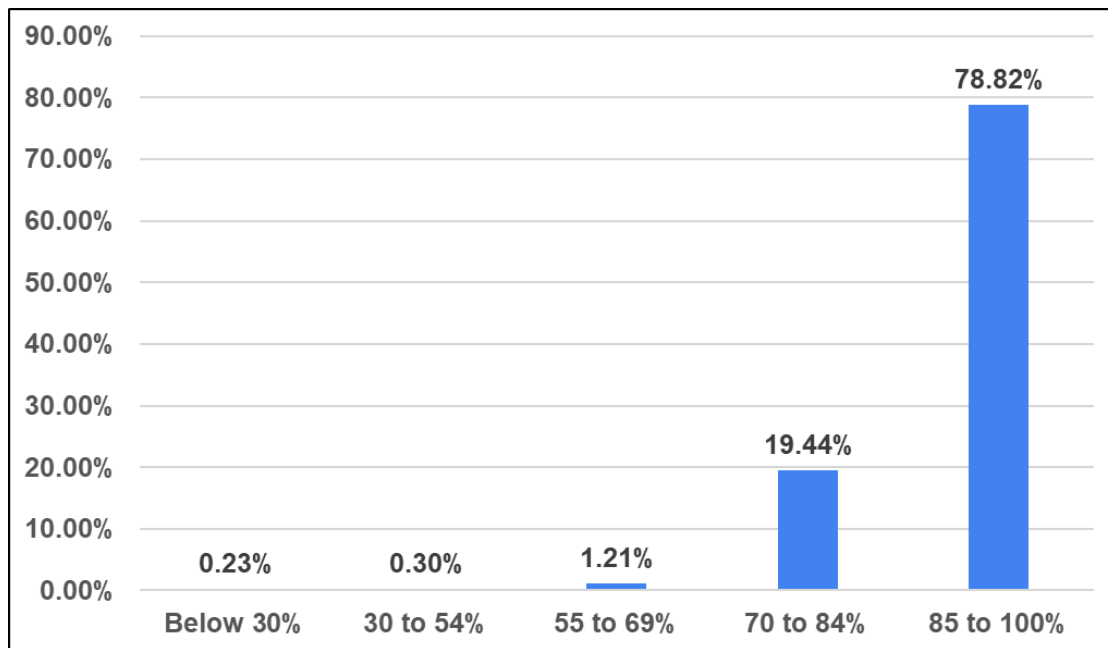




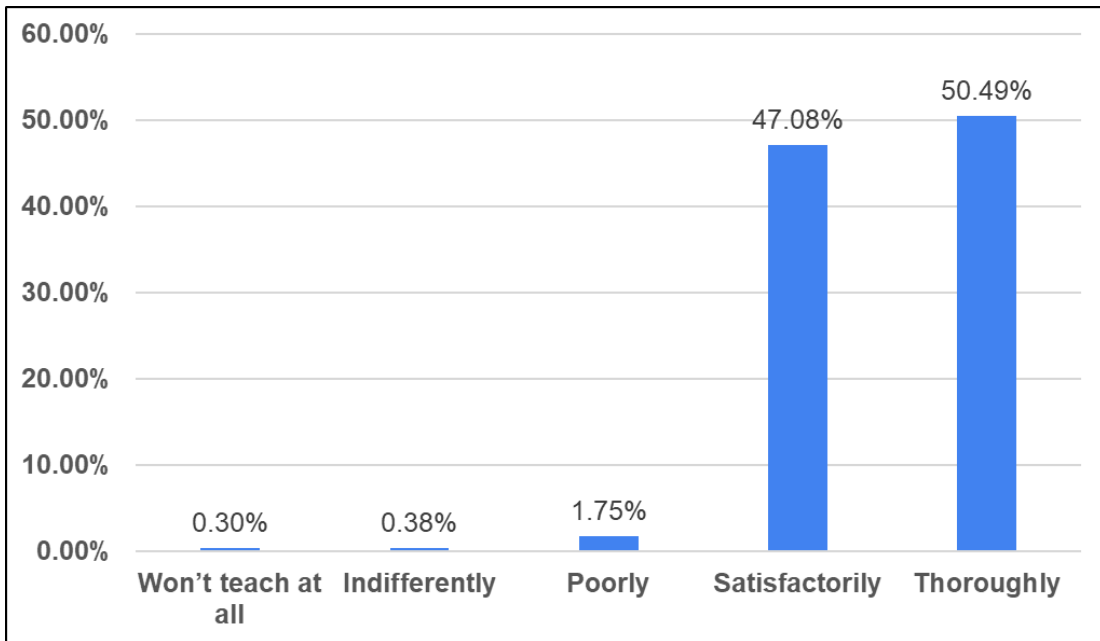
## MKSS's Cummins College of Engineering for Women Student Satisfaction Survey 2023-24



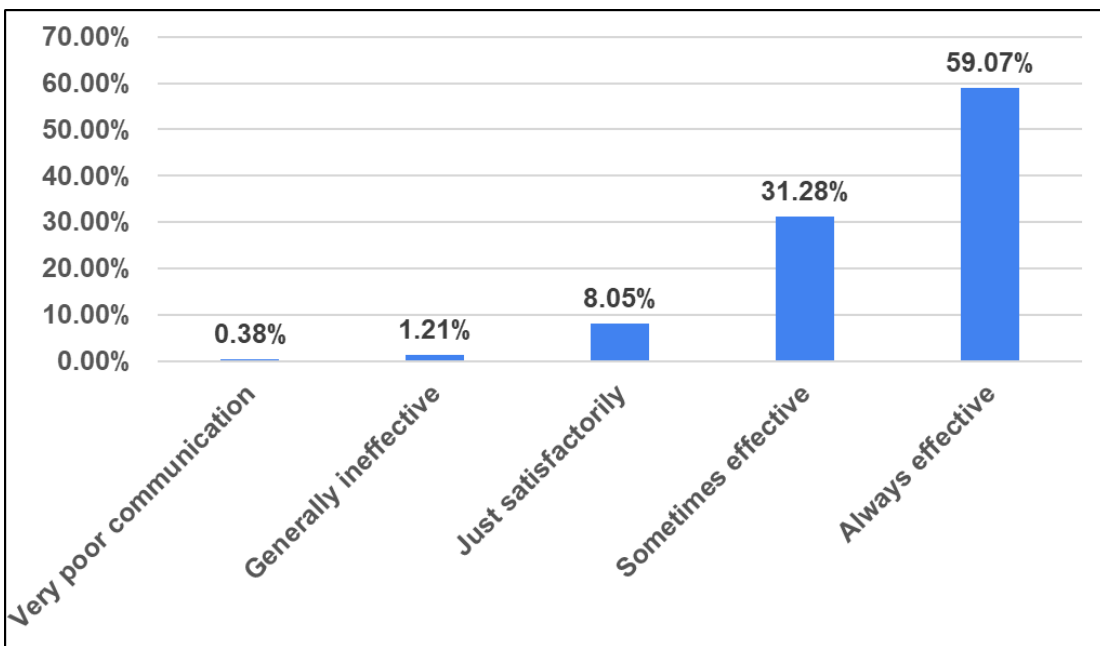
1. How much of the syllabus was covered in the class?



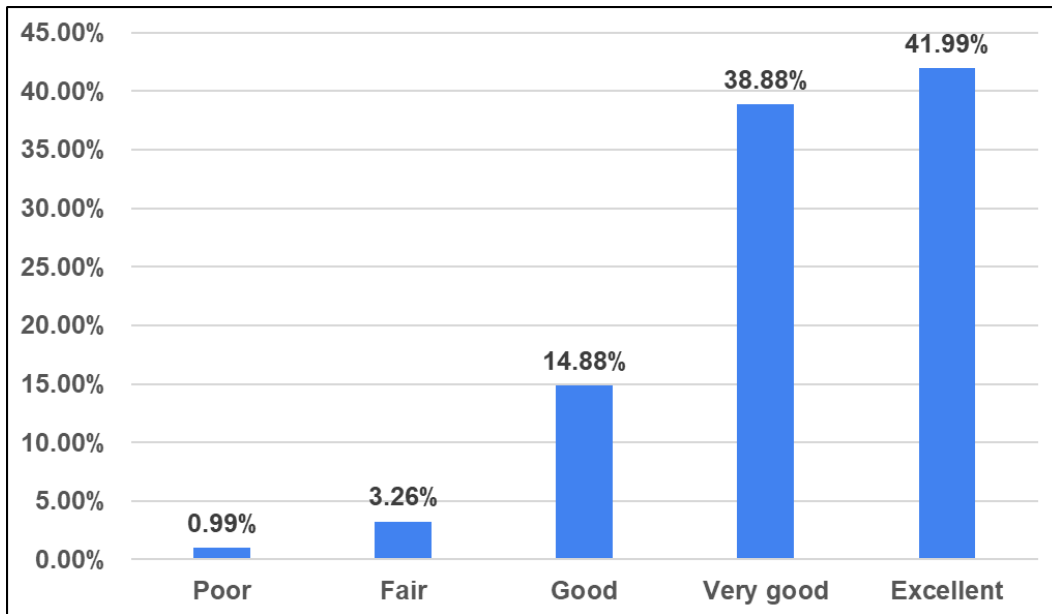
2. How well did the teachers prepare for the classes?



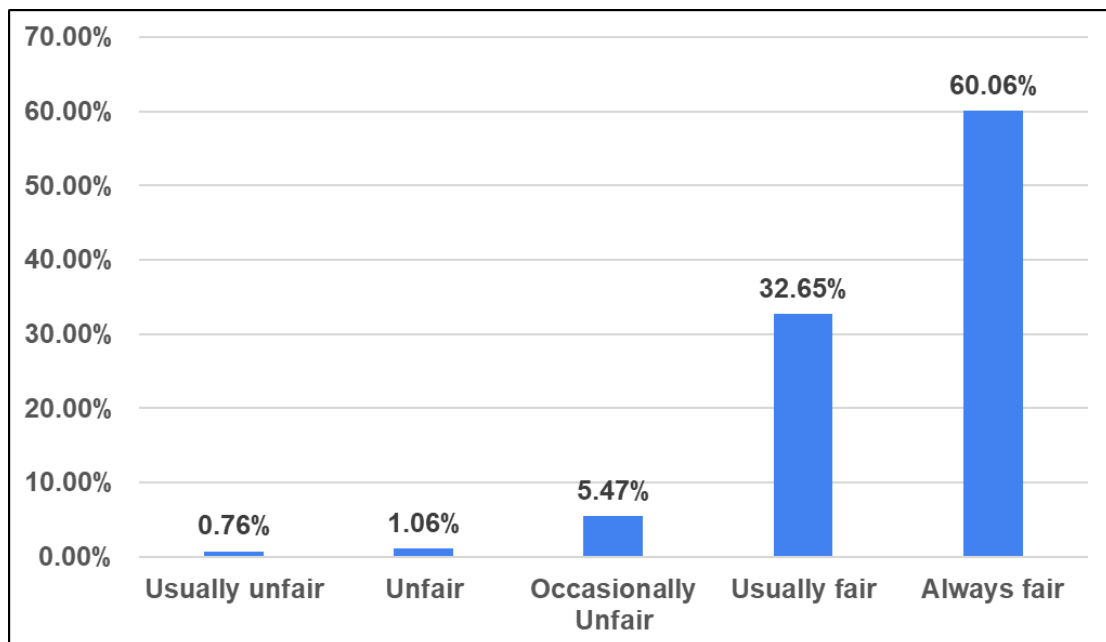
3. How well were the teachers able to communicate?



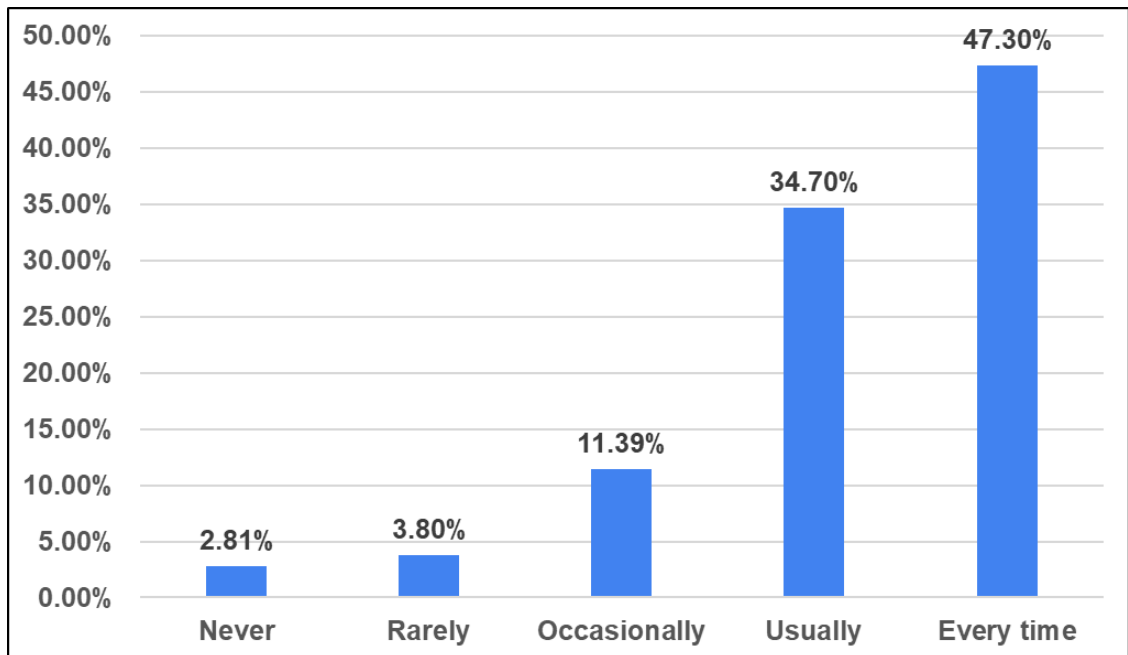
4. The teacher's approach to teaching can best be described as;



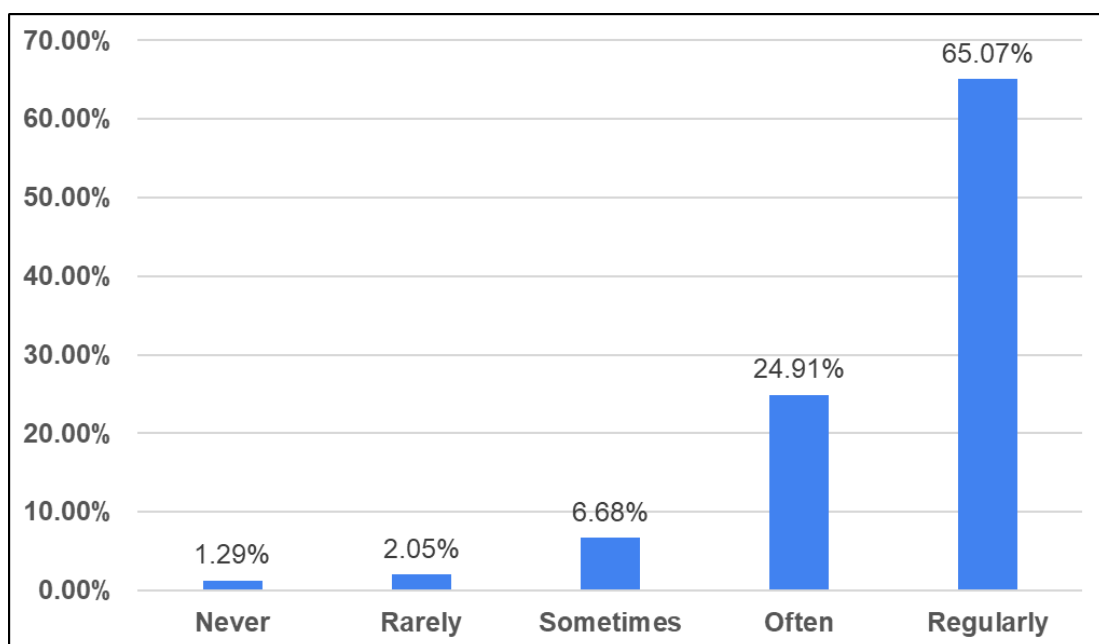
5. Fairness of the internal evaluation process by the teachers.



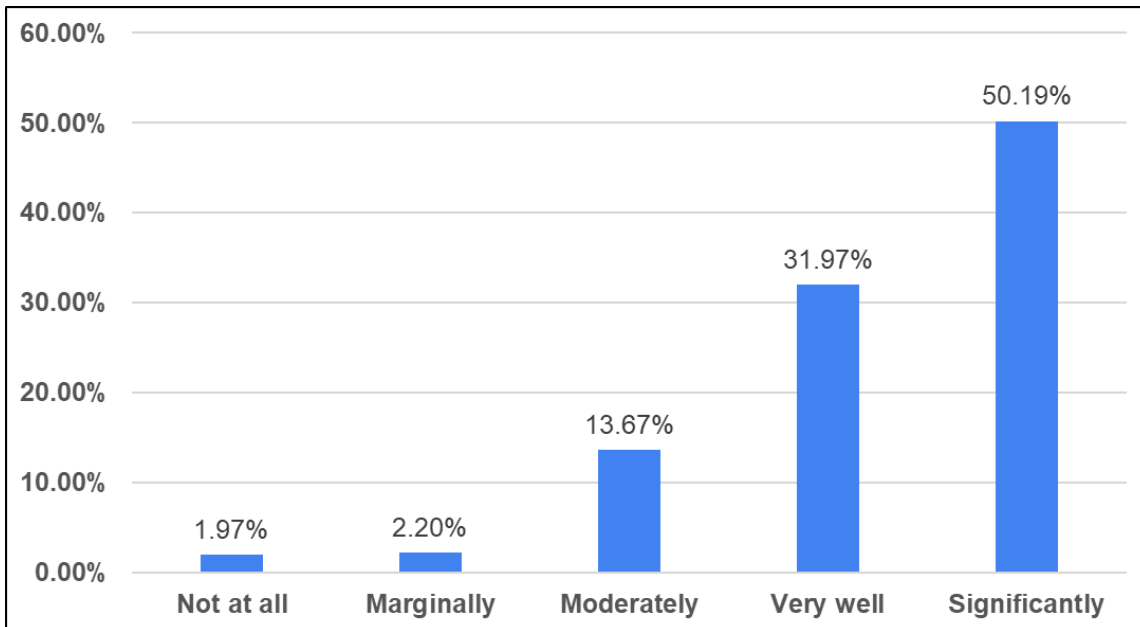
6. Was your performance in assignments discussed with you?



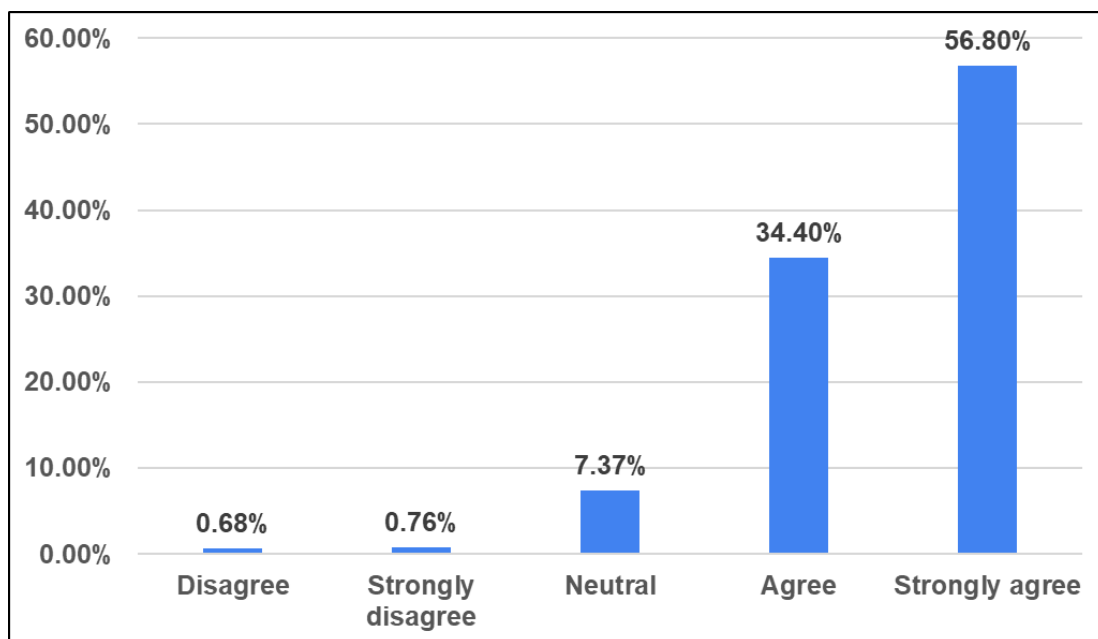
7. Does the institute takes active interest in promoting internship, student exchange, field visit opportunities for students?



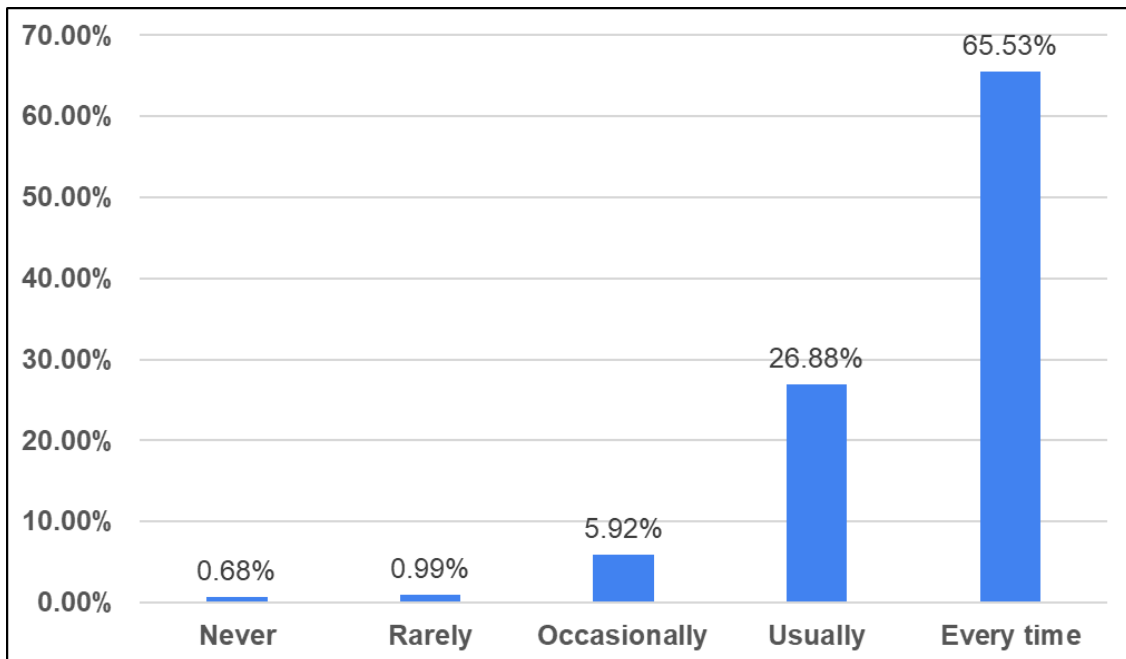
8. Does the teaching and mentoring process in the institution helps you in your overall cognitive, social and emotional growth?



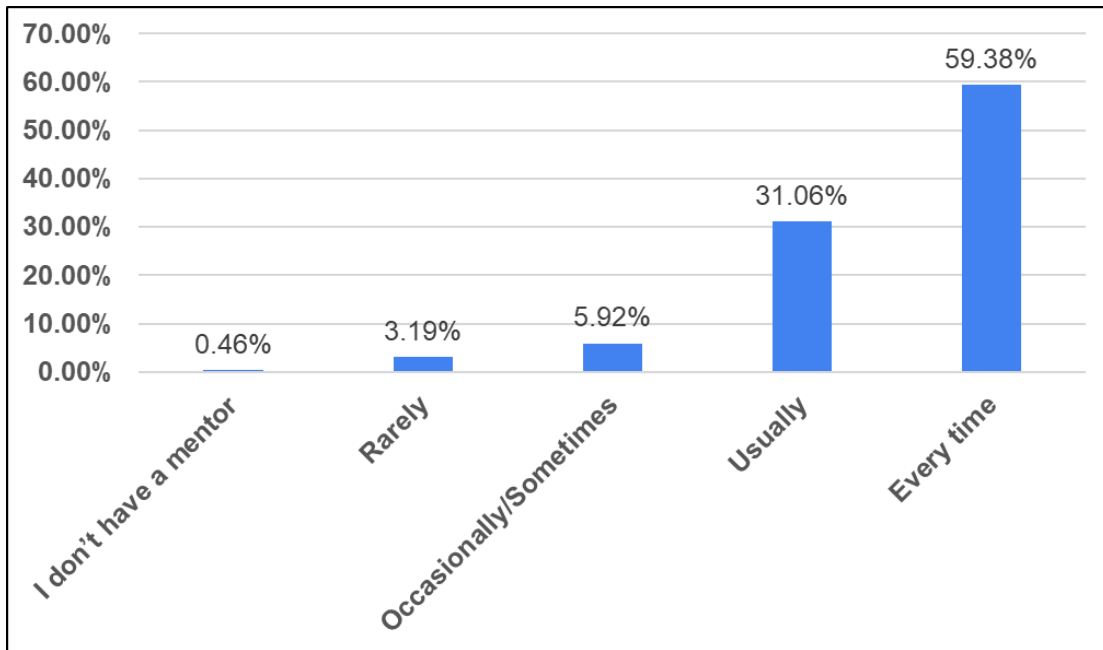
9. Does the institution provide multiple opportunities to learn and grow.



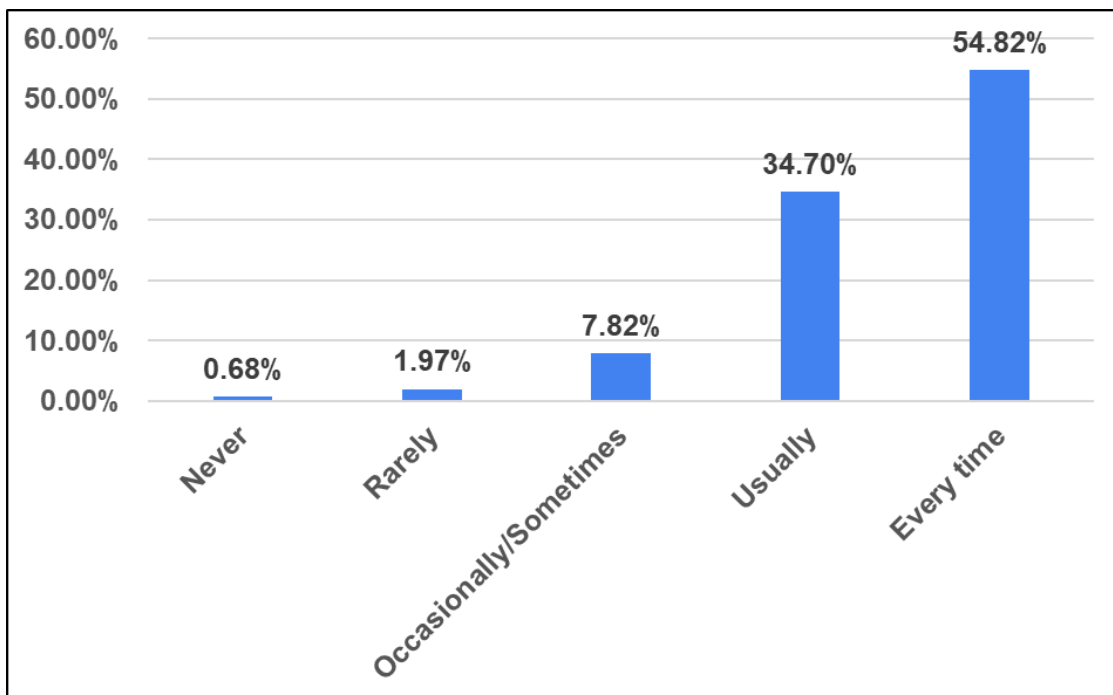
10. Do teachers inform you about your expected competencies, course outcomes and programme outcomes.



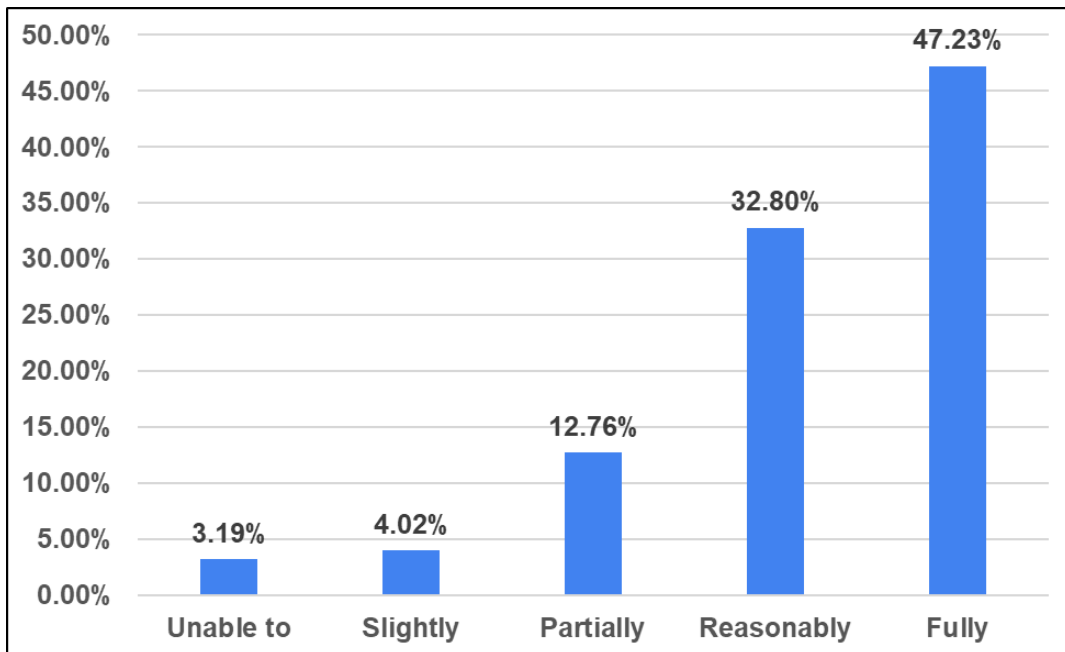
11. Does your mentor does a necessary follow-up with an assigned task to you.



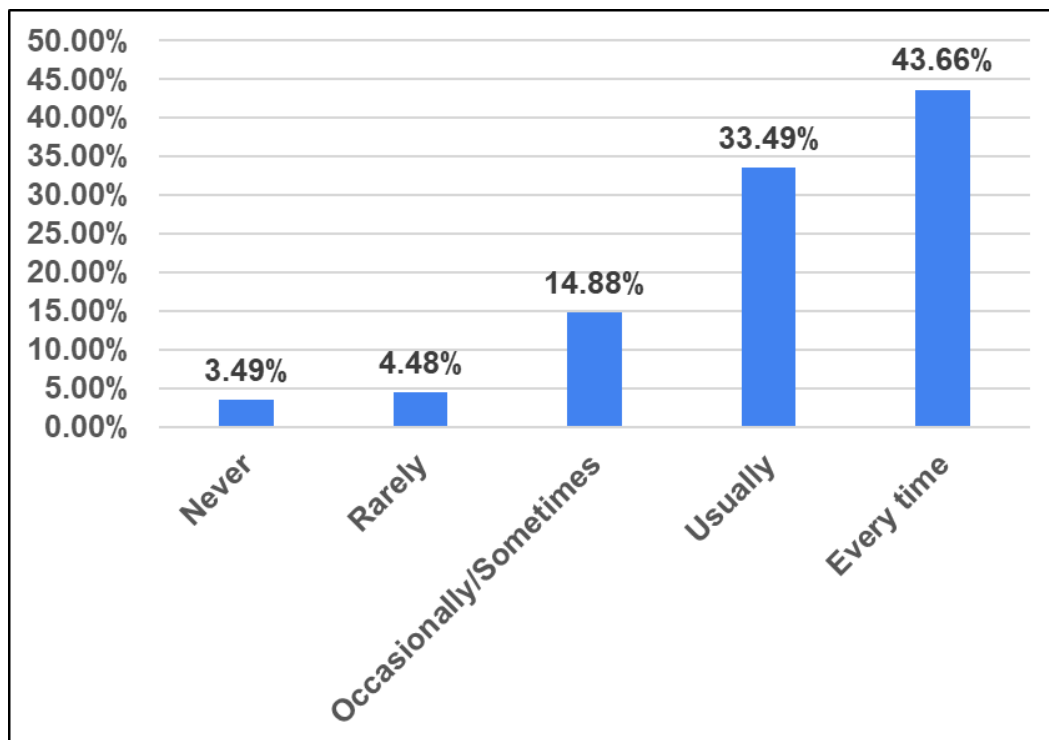
12. Does the teachers illustrate the engineering concepts through real life examples and applications.



13. Does the teachers identify your strengths and encourage you with providing right level of challenges.

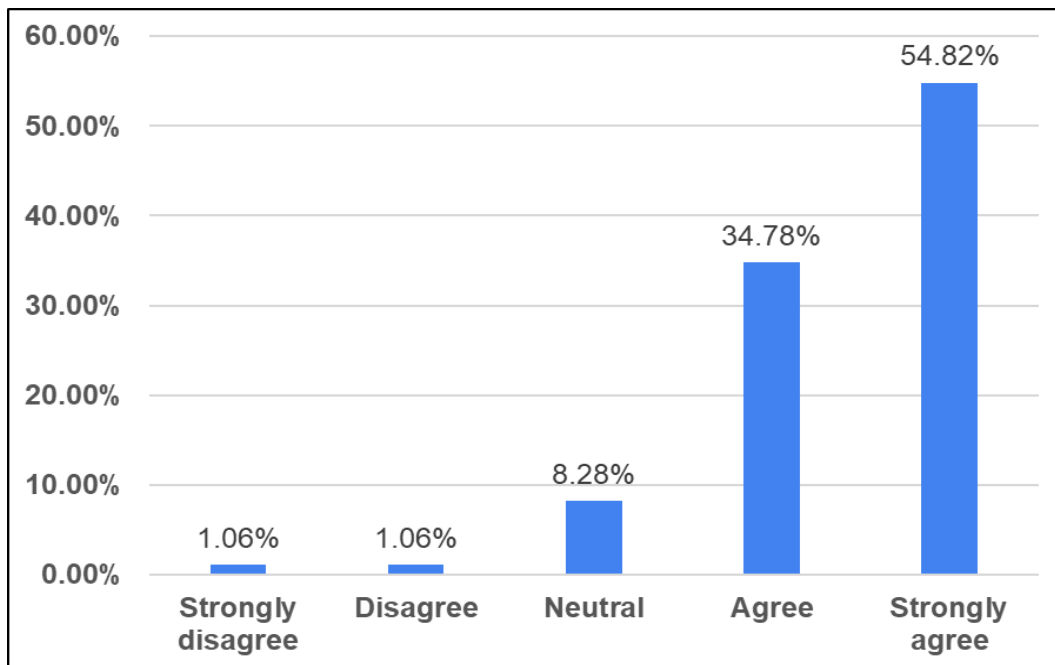


14. Does the teachers are able to identify your weaknesses and help you to overcome them.

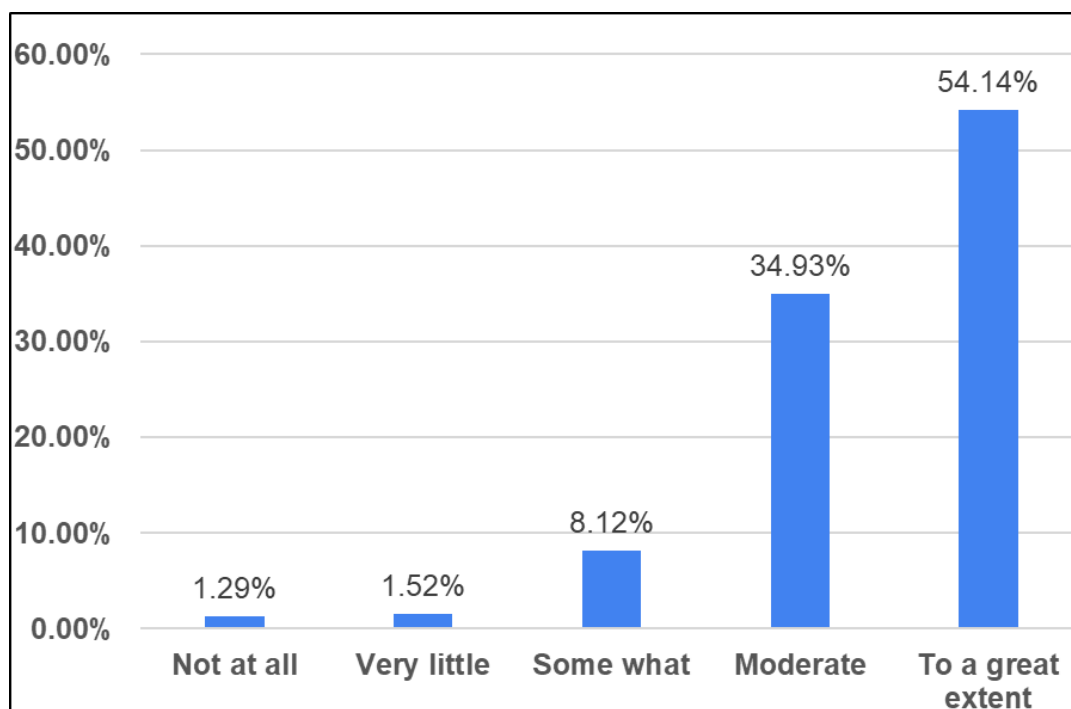




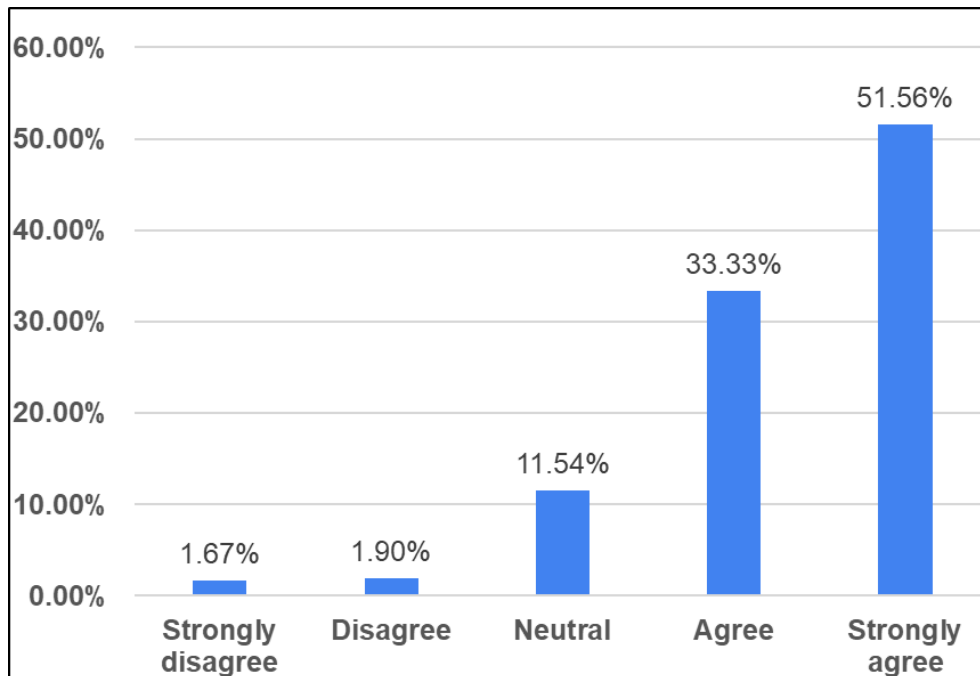
15. Does the institution make effort to engage students in the monitoring, review and continuous quality improvement of the teaching learning process.



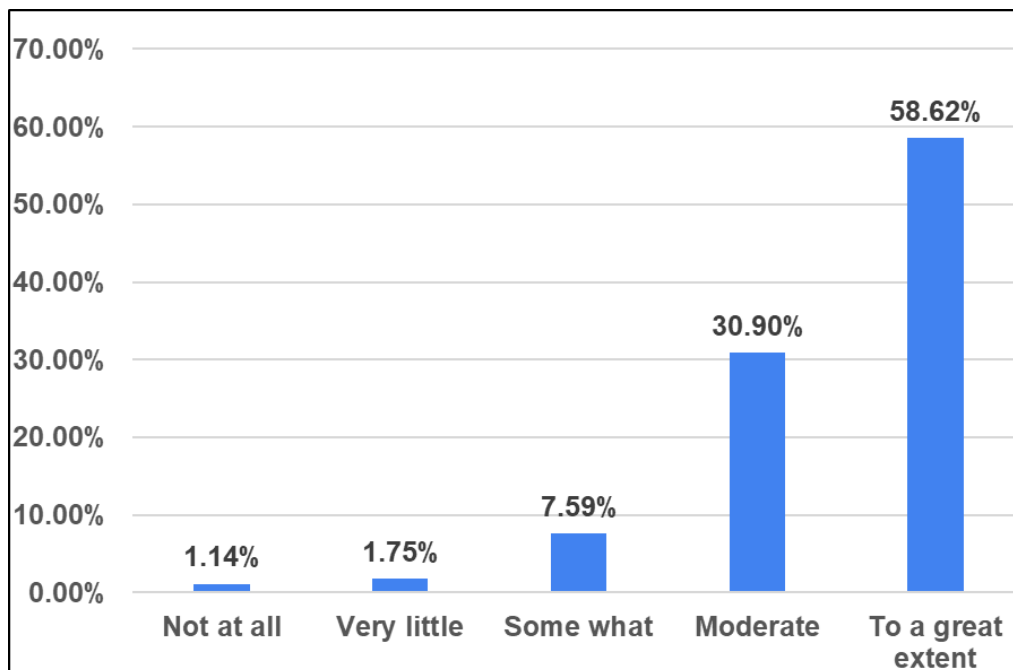
16. Does the institute/ teachers use student centric methods, such as experiential learning, participative learning and problem solving methodologies for enhancing learning experiences.



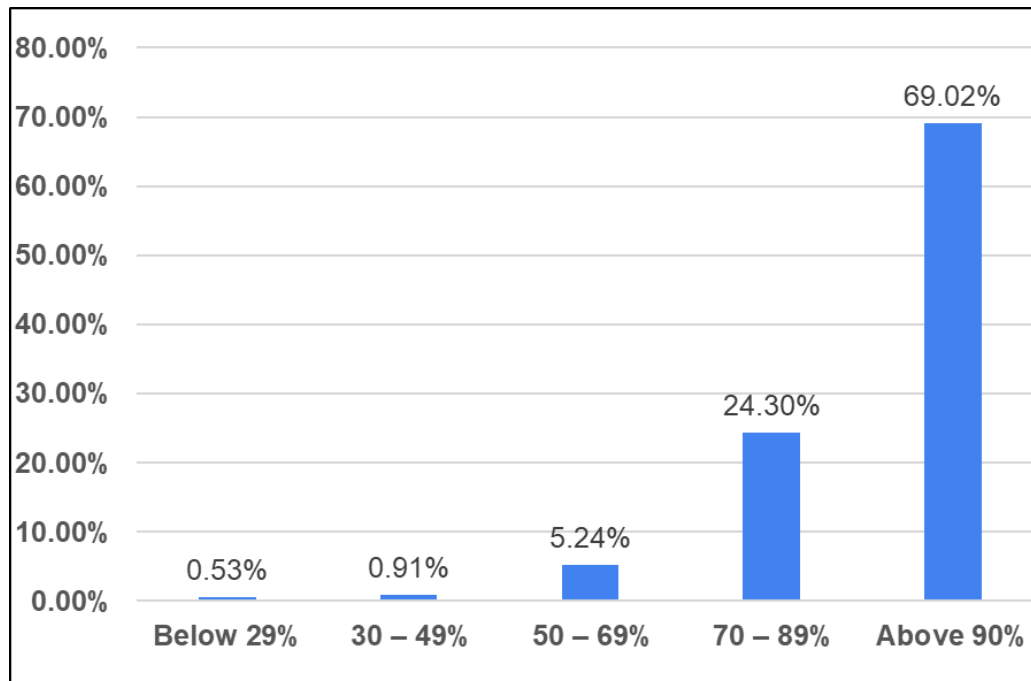
17. Does the teachers encourage you to participate in extracurricular activities.



18. Efforts are made by the institute/ teachers to inculcate soft skills, life skills and employability skills to make you ready for the world of work.



19. What percentage of teachers use ICT tools such as LCD projector, Multimedia, etc. while teaching.



20. The overall quality of teaching-learning process in your institute is very good.

